

## Some Notes on Japanese Melyridae (Coleoptera)

Masataka SATÔ

Biological Laboratory, Nagoya Women's University, 468 Japan

and

Walter WITTMER

Naturhistorisches Museum Basel, Switzerland

**Abstract** A new melyrid beetle, *Haplomalachius ishiharai* sp. nov., is described from Central Japan. A Ryukyuan melyrid species, *Attalus tokara* M. SATÔ, is synonymized with *A. trochantinus* WITTMER. The female of *Hypebaeus picticollis* (KIESENWETTER) is briefly described and illustrated.

*Haplomalachius ishiharai* M. SATÔ et WITTMER, sp. nov.

(Figs. 1–6)

*Malachius vitticollis*?: NAKANE, 1985, *Fragm. coleopt.*, (38/40): 158 (nec KIESENWETTER, 1874).

*Male*. Body closely covered with aurocinereous pubescence, almost black, but with coppery luster on pronotum and head. Mouth-parts, clypeus, labrum, prosternum, trochanter, tibiae, tarsi, lateral sides of pronotum and elytra pale yellow to brownish yellow; terminal segments of all tarsi and metatrochanter darkened.

Head with eyes slightly shorter than breadth of prothorax, slightly convex, uneven with a depression between eyes; surface microreticulate on anterior area and finely and sparsely punctate on posterior area; eyes moderate, distance between them 2.4 times the diameter of an eye; antennae (Fig. 3) about half the length of body, serrate from 3rd to 10th segments, 2nd the shortest, 11th the longest. Pronotum about 1.2 times as broad as long; lateral sides gently rounded; each angle rounded; surface finely and closely punctate, sometimes furnished with a shallow fovea at each posterolateral corner. Elytra a little narrower than pronotum at the base and about 1.3 times as broad as pronotum at the apical broadest point; lateral sides somewhat dilated apically with rounded apices; surface transversely rugose. One or two terminal segments of abdomen protruding beyond the apices of elytra. Apical tergite slightly emarginate at the tip (Fig. 5).

Length: 3.8–3.9 mm (from apex of labrum to elytral apices); breadth: 1.2–1.3 mm.

*Female*. Antennae (Fig. 4) shorter than in male, slightly serrate. At least 3 terminal segments of abdomen protruding beyond elytra. Apical tergite rounded at the tip (Fig. 6).

Length: 4.4–5.0 mm (from apex of labrum to elytral apices); breadth: 1.6–1.9 mm.

Holotype: ♂, Ishidoshuku, Saitama Pref., 11–V–1986, M. SATÔ leg (in coll. Nagoya Women's Univ.). Allotype: ♀, same data as for the holotype (in coll. Natn. Sci. Mus., Tokyo). Paratypes: 2 ♂♂, 10 ♀♀, same data as for the holotype; 1 ♂, Dôman, Toda, Saitama Pref., 8–V–1986, M. HASEGAWA leg.; 1 ♂, Ôifutô, Tokyo, 1–V–1983, A. IZUMI leg.; 14 exs., Ômiya-shi, Saitama Pref., 10–V–1988, T. SHIMOMURA leg. (in coll. Naturh. Mus. Basel; Natn. Sci. Mus., Tokyo; Ent. Lab., Ehime Univ.; and Nagoya Women's Univ.).

This new species can be compared with *Cordylepherus xantholoma* (KIESENWETTER) on account of its simple apex of elytra. However, the head of *H. ishiharai*, is simple between antennal sockets, while that of the latter is of completely different shape.

This new species is dedicated to Emer. Prof. Tamotsu ISHIHARA on the occasion of his seventieth anniversary. SATÔ was graduated under the supervision of Professor ISHIHARA, and always entertains a profound respect for him.

#### *Attalus trochantinus* WITTMER

*Attalus trochantinus* WITTMER, 1982, Spec. Iss. Mem. Retir. Emer. Prof. M. Chûjô, 53 (Insel Oshima).

— NAKANE, 1983, Kita-Kyûshû no Konchû, **30**: 162.

*Attalus tokara* M. SATÔ, 1986, Ent. Pap. pres. Kurosawa, Tokyo, 239 (Is. Ko-takara-jima). — NAKANE, 1987, Kita-Kyûshû no Konchû, **34**: 3. *Syn. nov.*

*Attalus tokara* is a mere colour variation of *A. trochantinus*, and is considered to be a synonym of the latter.

#### *Hypebaeus picticollis* (KIESENWETTER)

(Fig. 7)

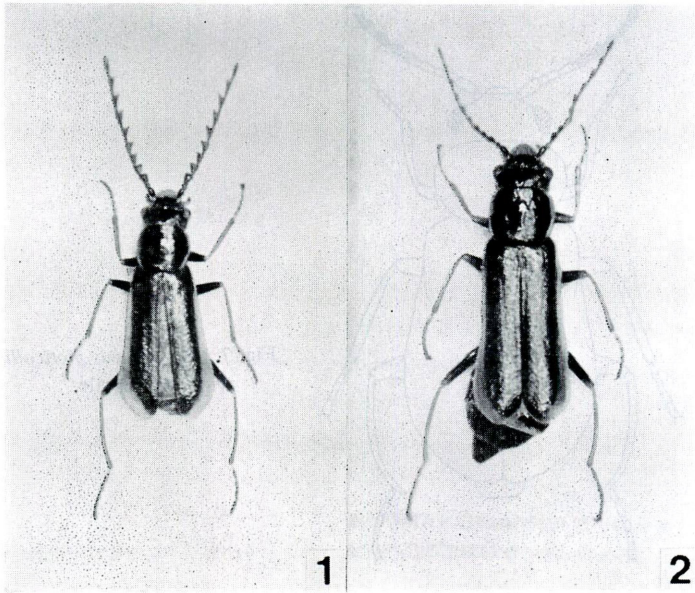
*Ebaeus picticollis* KIESENWETTER, 1874, Berl. ent. Z., **18**: 287 (Nagasaki).

*Hypebaeus picticollis*: NAKANE, 1983, Kita-Kyûshû no Konchû, **30**: 161.

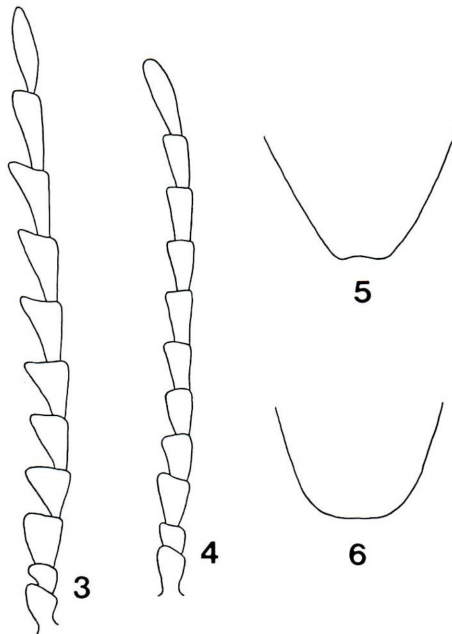
Until now, female of this species has not been known. Fortunately, we were able to examine some female specimens through the courtesy of Emer. Prof. M. CHÛJÔ and Mr. M. SAKAI. A brief description and illustration is given herein.

*Female.* Body closely covered with fine aurocinereous pubescence. Head and most parts of ventral side brownish black; pronotum, 6 terminal segments of antennae and basal halves of femora brown; elytra dark brown; buccal appendages, 5 basal segments of antennae and legs yellowish.

Head almost smooth on the surface; eyes lateral, somewhat large and separated by about 3.2 times the diameter of each eye; antennae slightly serrate. Pronotum transversely oval, about 1.3 times as broad as long; surface smooth. Elytra widened posteriad, about 1.6 times as broad as pronotum, about 1.3 times as long as broad; surface closely punctate; integument microreticulate. Legs slender, metatibia gently curved outwards.



Figs. 1-2. *Haplomalachius ishiharai* sp. nov.; 1, male; 2, female.



Figs. 3-6. *Haplomalachius ishiharai* sp. nov.; 3, 5, male; 4, 6, female; 3-4, antennae; 5-6, last tergites.

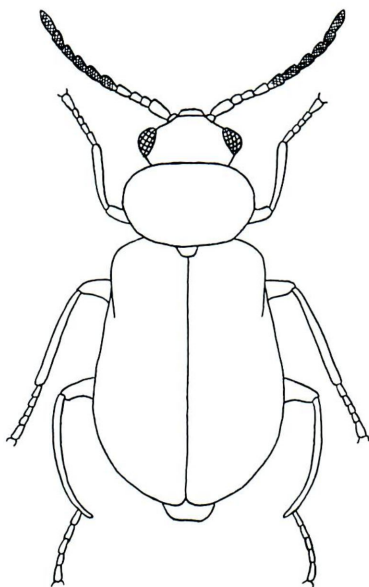


Fig. 7. *Hypebaeus picticollis* (KIESENWETTER), female.

Length: 2.5–2.8 mm; breadth: 1.2–1.3 mm.

*Specimens examined.* 1 ♀, Kuroson, Kôchi Pref., 19~20-VII-1957, M. CHÛJÔ leg.; 2 ♀♀, Shiroyama, Tokushima Pref., 18-V-1967, M. SAKAI leg.

### 要 約

佐藤正孝・Walter WITTMER: 日本産ジョウカイモドキ科の覚え書。——東京周辺の草地的環境で得られた *Haplomalachius* 属の 1 種を新種として記載した。種名の *ishiharai* は、佐藤の恩師、愛媛大学名誉教授石原保先生のご希を祝して献名した。トカラ列島小宝島から記載された *Attalus tokara* M. SATÔ は、奄美大島から記載された *A. trochantinus* WITTMER の単なる色彩変異にすぎないので、ここでシノニムとして扱った。*Hypebaeus picticollis* (KIESENWETTER) は、これまで雌が知られていなかったもので、簡単に記載し図示した。

### References

- EVERS, A. M. J., 1985. Aufteilung der paläarktischen Arten des Gattungskomplexes *Malachius* F. 54 Beitrag zur Kenntnis der Malachiidae. *Ent. Blätt.*, **81**: 1–40.
- KIESENWETTER, H. v., 1874. Die Malacodermen Japans nach dem Ergebnisse der Sammlungen des Herrn G. LEWIS während der Jahre 1869–1871. *Berl. ent. Z.*, **18**: 241–288.
- NAKANE, T., 1985. New or little-known Coleoptera from Japan and its adjacent regions, XXXVIII. *Fragm. coleopt.*, (38/40): 153–164.
- 1987. Notes on Japanese Melyridae (Coleoptera) II. *Kita-Kyûshû no Konchû*, **34**: 1–5, pl. 1.
- SATÔ, M., 1986. The genus *Attalus* (Coleoptera, Melyridae) of the Ryukyu Archipelago. *Ent. Pap. pres. Kurosawa, Tokyo*, 233–242.
- WITTMER, W., 1982. Zur Kenntnis der Malachiidae (Coleoptera) des Ryukyu Archipels (70. Beitrag zur Kenntnis der palaearktischen Malachiidae). *Spec. Iss. Mem. Retir. Emer. Prof. M. Chûjô, Nagoya*, 51–54.